

F[®] be

F[®] formway

**What determines
the shape of a chair?
You do — the sitter.
You need a chair that
responds to the way
you sit and move,
whatever you are doing.**



Introducing Be.

The world's first multi-posture, multi-mode task chair.

Work is changing. We no longer sit still, but move continuously, from task to task, from state to state, from focussed work to collaborative work and back again. Be offers freedom of movement and continuous support for the range of postures and tasks you perform throughout the day.





Be Moved.

The Be chair moves as you move. It flexes as you change position, responding to what you do naturally.

The unique Flex Top creates a comfortable armrest, accommodating interactive postures. The back features a tensioned lumbar region that curves into the arms to provide support in any position, including side sitting.

The compliant back and flexing seat combine to extend your range of movement and allows you to sit comfortably in any task position.

Be is a chair that follows your lead.





Be Yourself.



The Be chair responds to natural human behaviour. It flexes as you change position, freeing you from complex manual adjustments while supporting multi-directional movement.

With just three standard intuitive adjustments, you can easily adjust the chair to make it your own. Seat height, seat depth and recline preference can be adjusted with ease, while all other multi-directional movements require no adjustment at all.

Be allows you to be you.





Be Supported.

The Be chair is designed for both mind and body. Be supports the multitude of work postures and work modes through the combination of unique design features and advanced materials.

The Dynamic Suspension offers a smooth, effortless recline motion without the need for manual tension adjustment, while the seat movement is synchronised to keep your eyeline virtually constant in different sitting positions.

The Be chair supports how we communicate with others, promoting both physical and emotional wellbeing as well as free expression, interaction and collaboration.

Be at one with your chair.



Details



Flex Back

The Flex Back responds to your movements throughout the day. The resilient Flex Back Skin and distinctive figure 8 structure combine to support varying work postures and a wide range of movement. The formed and tensioned skin ensures continuous lumbar support. An additional height adjustable lumbar support is available to meet personal preference.



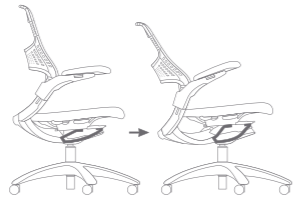
Flex Top

The Flex Top provides a comfortable resting surface for your arm when adopting postures for communication and expression. The Flex Top is there when you need it and returns to an upright shoulder support position automatically.



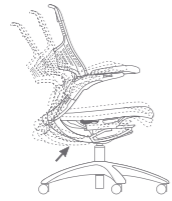
Flex Seat

The Flex Seat offers 270° of seat edge flex, without a hard frame or obtrusive levers along the seat perimeter. This allows you to comfortably use the whole seat in multiple postures, including side sitting. The Flex Seat distributes your body weight evenly to avoid concentrated pressure points and keeps you comfortable for longer, allowing you to stay focused on the task at hand. The seat height and depth to suit your needs is quick and easy to adjust while seated.



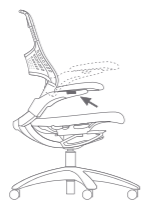
Dynamic Suspension

The Dynamic Suspension automatically adjusts the recline resistance based on your weight to provide a smooth, effortless motion. A 3-position preference control allows you to easily fine tune the recline resistance to suit the task at hand. Four independent flexors on the suspension unit support and respond to your movements – forward, backward, and side-to-side, achieving natural, multi-directional movement with fewer parts than traditional chair mechanisms. The seat height and depth to suit your needs is quick and easy to adjust while seated.



Synchronised Movement

The movement of the seat and back are synchronised, holding your eye line virtually constant while allowing your body to stretch and rest. The chair geometry mimics your natural movement so that your back is constantly supported whatever your position.



Height Adjustable Arms (Optional)

The height adjustable arms are shaped to provide an extension of the lumbar support, so your lower back is always supported, even when side sitting. The cantilevered arms provide plenty of leg clearance for seamless changes in position.

Base

The low profile 5-Star base enables easier leg movement, and a comfortable footrest.

Dimensions

Seat

Height 395–530mm

Width 520mm

Depth 385–460mm

Backrest

Height 595mm

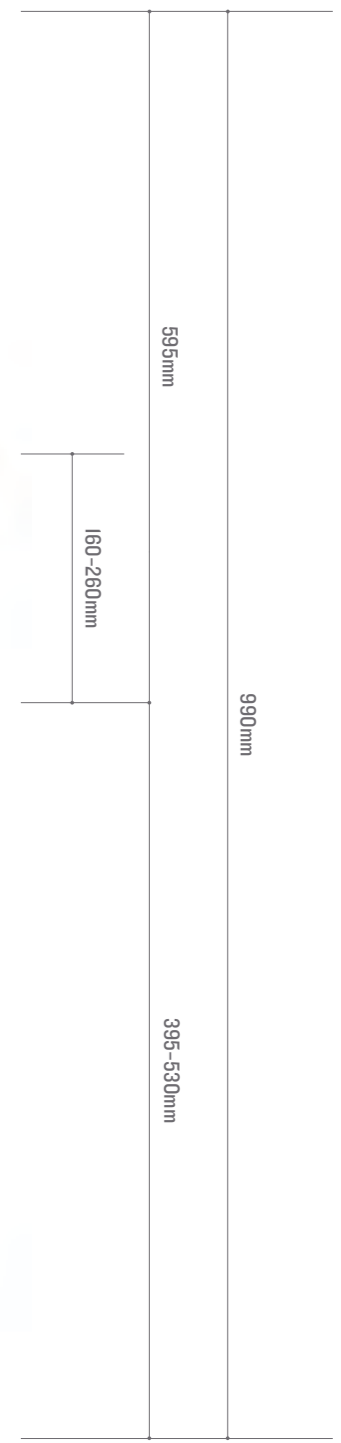
Width (at top) 470mm

Lumbar height 170–220mm

Arms

Height above Seat 160–260mm

Width between arm pads 510mm



Onyx Frame & Skin

Seat Topper



Onyx Storm



Pebble Desert

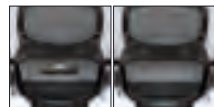


Lemongrass Espresso



Firecracker Bluemarine

Lumbar



With Lumbar Without Lumbar

Arms



Height Adjust No Arms

Base



Onyx Nylon Polished Aluminium

Casters



Soft Floor (Black) Hard Floor (Black)



Meteor Frame & Skin

Seat Topper



Onyx Storm



Pebble Desert



Lemongrass Espresso



Firecracker Bluemarine

Lumbar



With Lumbar Without Lumbar

Arms



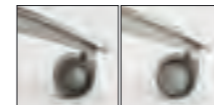
Height Adjust No Arms

Base



Meteor Nylon Polished Aluminium

Casters



Soft Floor (Black) Hard Floor (Black)



Be Seated.

Be sustainability

Sustainability is reflected in the Be chair through its unique design, materials and manufacturing processes.

The Be chair is material efficient, achieving high performance levels whilst minimising material types and part count. Be is designed for an extended product life, with a durable, modular construction that enables refurbishment. Be is easy to disassemble and compatible polymers are grouped to enable recycling.

The total recycled content for the chair with arms and aluminium base is 46% and for a plastic base is 40%. Be contains no polyvinyl chloride (PVC).

Be is independently certified to meet the stringent requirements of Environmental Choice New Zealand and Good Environmental Choice Australia. Be contributes towards Green Star Office Interiors assessment.

Internationally the chair is GREENGUARD Children & Schools certified for low-emitting materials, and is the first chair to achieve a Sustainable Platinum rating under the Sustainable Product Standard.

Contact Formway for more information about our product stewardship services.



FW 2008
E24 29 2005
Furniture and Fittings



Furniture and Fittings
License No. 2008042

www.formway.com/be

Be is protected by intellectual property rights internationally owned by Formway Design Studio Limited, comprising of copyright or equivalent rights, patents and design registrations. Be is a trademark of Formway Design Studio Limited, and is the subject of applications and registrations in a number of countries.

New Zealand

Auckland: Formway, T +64 9 353 4416
Wellington: Formway, T +64 4 802 0795
Hamilton: CEMAC Commercial Interiors, T +64 7 839 5145
Christchurch: design4work, T +64 3 366 2389
Dunedin: design4work, T +64 3 477 6797

Australia

Be is available in Australia through Zenith Nationally
Melbourne Sydney Canberra Brisbane Perth Adelaide Darwin 1300 013 013
info@zenithinteriors.com.au



www.formway.com

ZENITH

www.zenithinteriors.com.au